



LED LIGHTING
RENEWABLE ENERGY



SNI IEC 60598-2-3:2016
L S P F - 0 4 7 - I D N
NPE 00107:QLS,LU,1116



Compliance:

- SNI IEC 60598-2-3:2016
- CISPR 15:2013+A1:2015
- IES LM-79-08
- IEC 61000-3-2:2014

NS 70-225 Watt

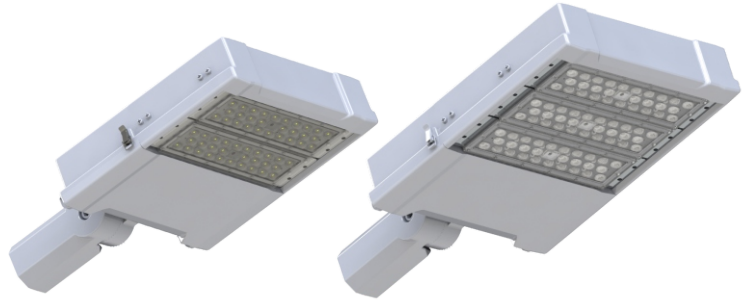
LED Streetlight/Floodlight/Highmast

is a modular LED lighting using the Luxeon 5050 high power SMD LED with the highest efficacy system currently reaching > 150 lumens per watt*. The construction of the lamp body and heatsink are made of sturdy aluminum die casting / extrusion with adjustable lighting angle from 0 to 90 degrees with a large selection of type I - V lenses that can be adapted to various lighting needs.

Equipped with NEMA ANSI C136.41, 7-pins receptacle which easily expanded to smart lighting system.

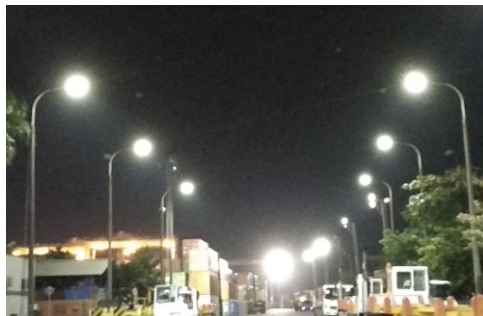
Applications:

Arterial road, Secondary road, Industrial area, Highmast road, Airport apron, Seaport yard, Sport stadiums, Tunnels, Underpasses, etc.



LUMINAIRE SPECIFICATIONS									
Model	SL-0302M					SL-0305M			
Rated Power (±10%)	70W	80W	90W	100W	120W	150W	200W	210W	225W
Rated Flux	11300	12800	15000	16400	19100	22000	28000	29000	30000
System Efficacy	> 150 lm/w								
Input Voltage	12/24 VDC / 100~240 VAC								
Frequency	50 / 60Hz								
Correlated Color Temperature (CCT)	5000K (3000K/4000K/5700K/6500K tersedia sesuai permintaan)								
Estimated Lifetime	50.000 hours (under normal environment)								
Color Rendering Index (CRI)	>70								
LED Type	2 Modules Solarens LM-2850LL with Lumileds 5050 Chips					3 Modules Solarens LM-2850LL with Lumileds 5050 Chips			
Light Distribution/Beam Angle	Wide / narrow beam								
Case Temperature (Tc)	< 60°C								
Operating Temperature	-30°C ~ 50°C								
Working Humidity	10% ~ 90% RH								
Ingress Protection Rating	IP 66								
THD	< 16%								
Power Factor	> 0.97								
Receptacle (optional)	NEMA ANSI C136.41								
Surge Protection	10 kV								
Materials	Body: Aluminium Die Cast >4mm Ev. Thickness Cover: PMMA with UV Protection Hardware: Stainless Steel								
Dimensions mm (W x H x L)	342 x 339 x 84					415 x 339 x 84			
Installation	Bolt M16x2x50 galvanized (length min. 50mm)/Dynabolt / Sleeve Anchor M16x65mm (length min.)								
Weight (kg)	Approx. 6.2					Approx. 7			

Specifications are in minimum value and subject to change without prior notice.

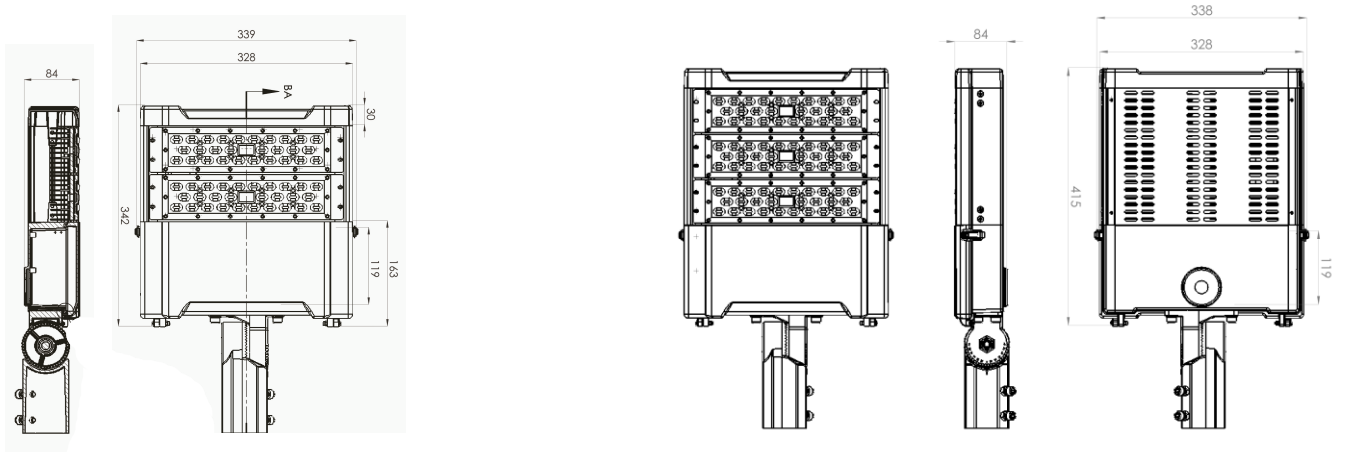


Office & Workshop :
PT SOLARENS LEDINDO
Komplek De Primaterra B2-3B
Jalan Sapan - Gedebage, Bandung 40297 - Indonesia
Tel. +6222-87301403 | Fax. +6222-87528436 | Email : sales2@solarens.com

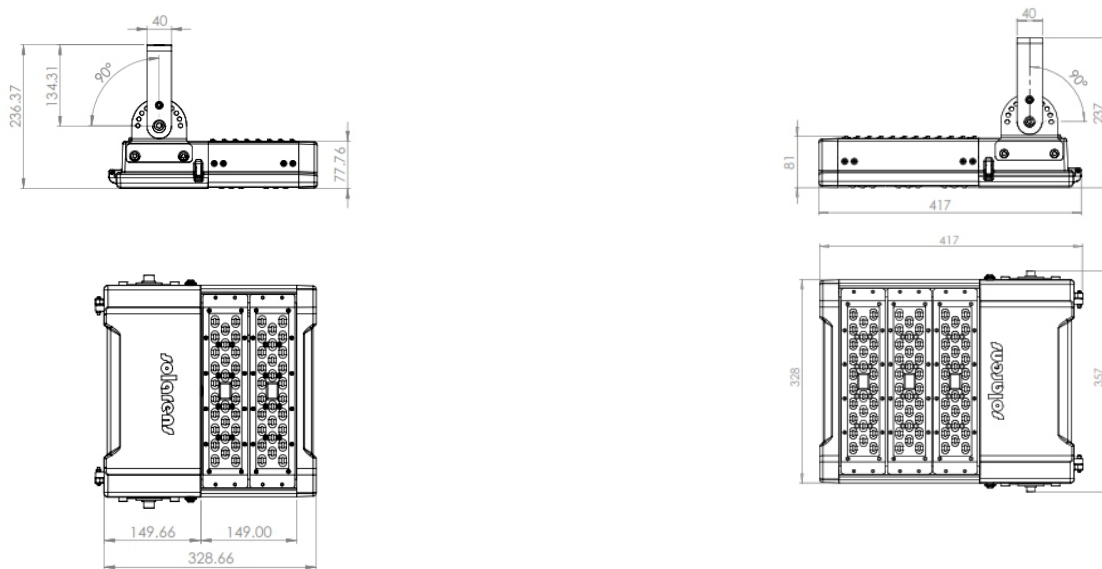


Dimensions:

NS with bracket A (SL Version)



NS with bracket B (FL/Highmast Version)



Smart ready

